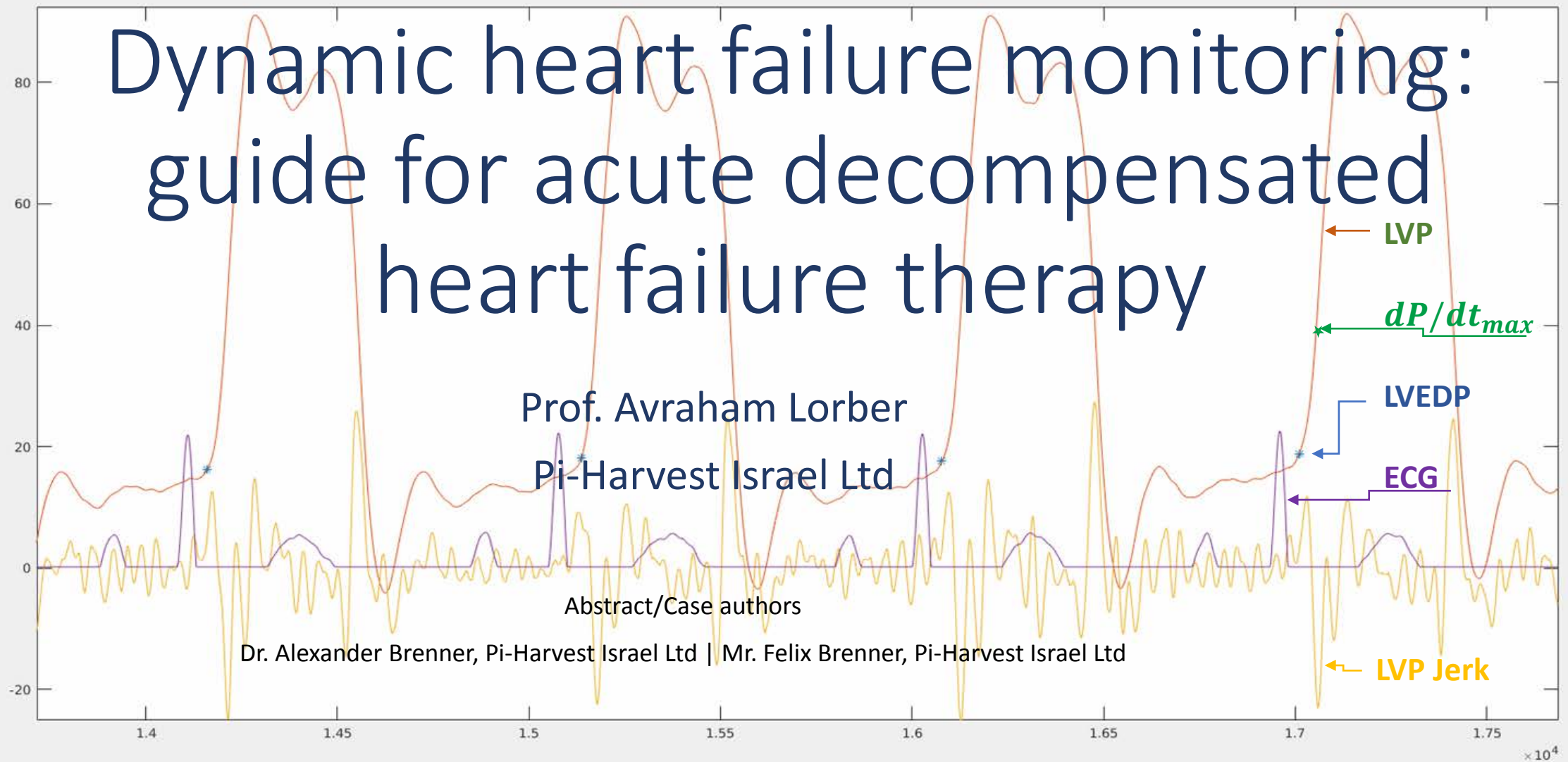


Dynamic heart failure monitoring: guide for acute decompensated heart failure therapy



CSI EDUCATION

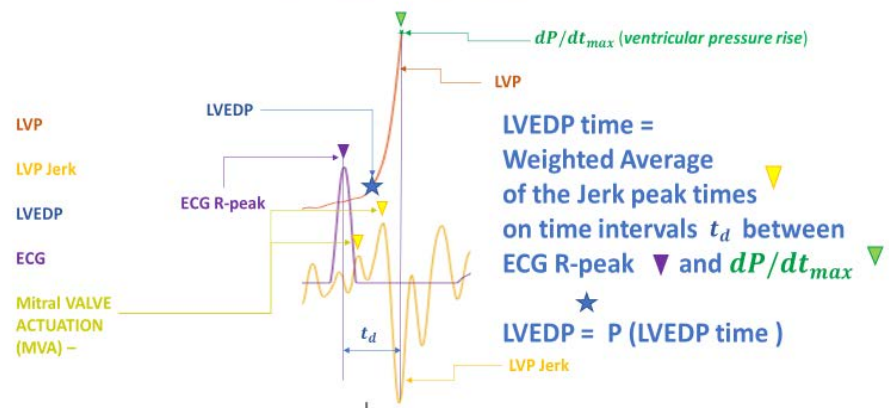




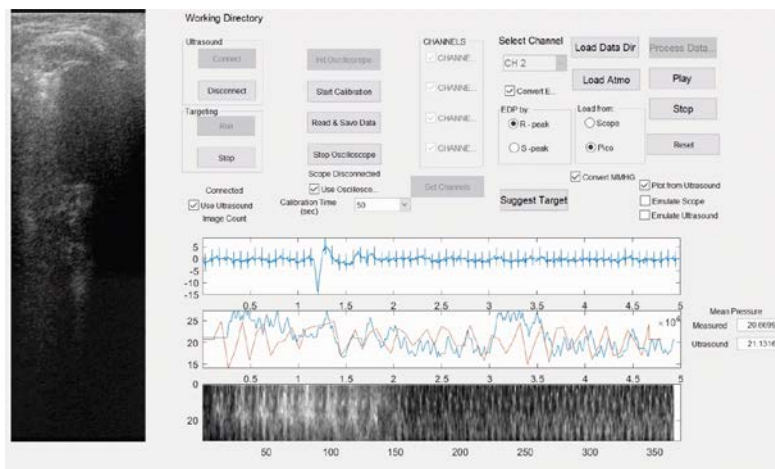
E-POSTER

ICPM system: Data acquisition and Calibration

LVP Jerk and LVEDP



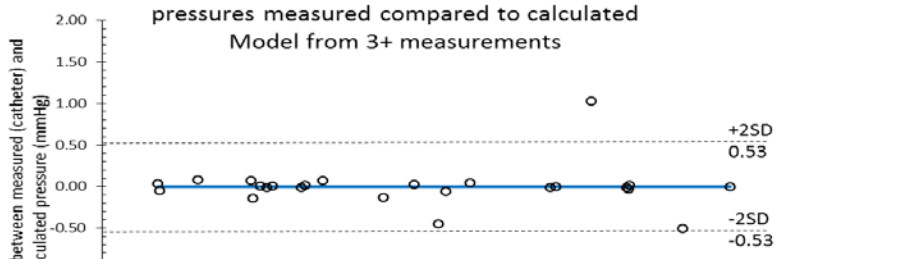
- LVP jerk analysis is the key for automatic LVEDP extraction from the pressure sensor data



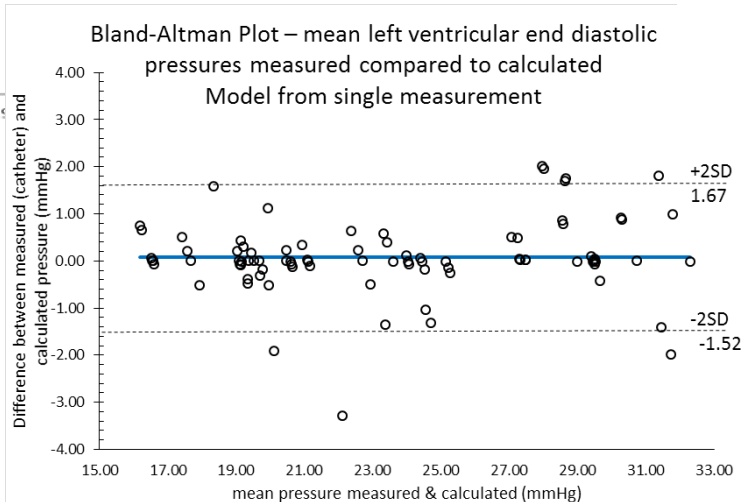
We present

- A real-time system
- fully non-invasive estimation and comparative prediction of pressures in cardiac chambers.
- in particular LVEDP and RVEDP.
- During the current study we demonstrate the capability of the system to operate in an entirely non-invasive manner eliminating the requirement for the initial invasive calibration.

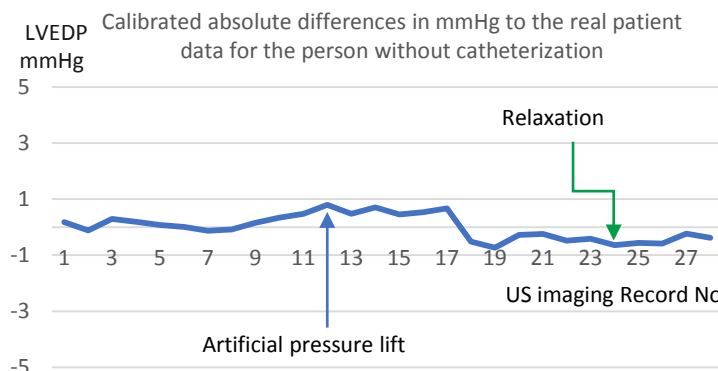
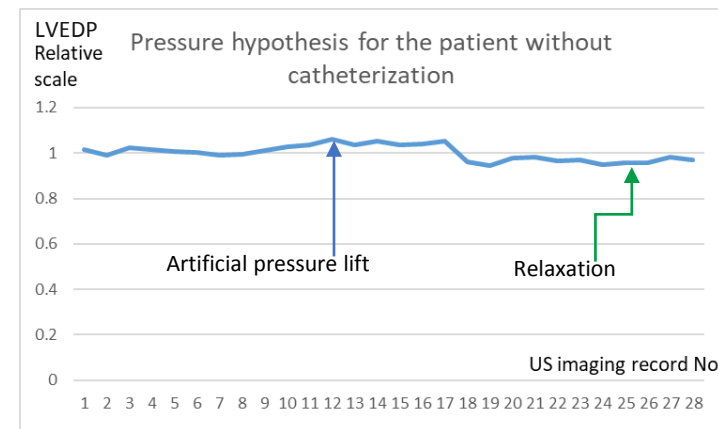
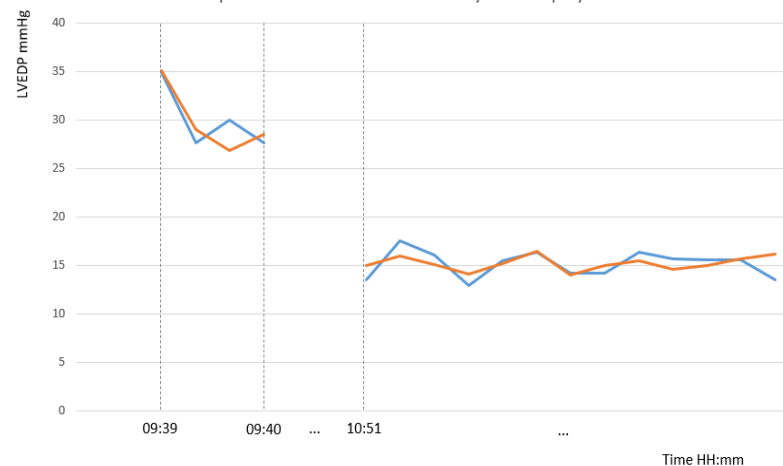
Bland-Altman Plot – mean left ventricular end diastolic pressures measured compared to calculated Model from 3+ measurements



Bland-Altman Plot – mean left ventricular end diastolic pressures measured compared to calculated Model from single measurement



NSTEMI patient before and after coronary stent deployment



ICPM system - a guide for Acute Decompensated heart failure treatment with improved real time data monitoring.

The goal is to provide an accurate information to control heart failure in real time reducing the hospitalization rate and therapeutic costs.

